

Broughton Village Information Session

Sunday 6th July @ 10.00am





Today's topics....

- Neighbourhood Plan Review
- Major Projects
- Parish Action Plan
- Local Government Reorganisation: What it means to Broughton
- Broughton Environment Group
- Heritage Open Days 2025
- Village news
- Open Forum



Neighbourhood Plan Review

Rule 14 consultation completed: key action was to get the design code updated in line with revised NPPF and Planning changes

AECOM completed work in March 2025

Advice sought groundwater-source-protection-zones (GPZ's) UU works and Newsham Hall lane site

Heritage focus and additional sites added such as Old Hall earthworks

Environmental issues such as the effects of new developments, possible flood sites (watercourses in the Parish added)

To go to PCC for Rule 15 consultation once PC agree on Tuesday



Major Projects



- **King George's Field Improvements** – The first major project, currently progressing with a planning application submitted to Preston City Council (June 16), focuses on enhancements to King George's Field. This includes a new playground, drainage and landscaping improvements, footpath installation, and expansion of parking capacity. This project has been developed in close coordination with Preston City Council's Parks Division since 2021.
- **Wainhomes development, New Park, Community Building & Allotments** – The second major project centres on land acquisition for expanded green space, a new community facility, allotments, circular footpath and a field to assist the school with its expansion. In 2020, the Parish Council approached several landowners. After detailed discussions with the agents representing land east of the current Pinfold Manor development and James Towers Way, Wainhomes and Emery Planning responded positively and engaged collaboratively with the Council.

King Georges Playing Field: completed

- Guide hut: new path, fire exit and disabled access, completed CiL grant
- Football shower block: PCC completing external work then internal work CiL grant
- Drainage improved, ditch cleared part completed
- Mini orchard in Pinfold with Heritage fruit trees: completed



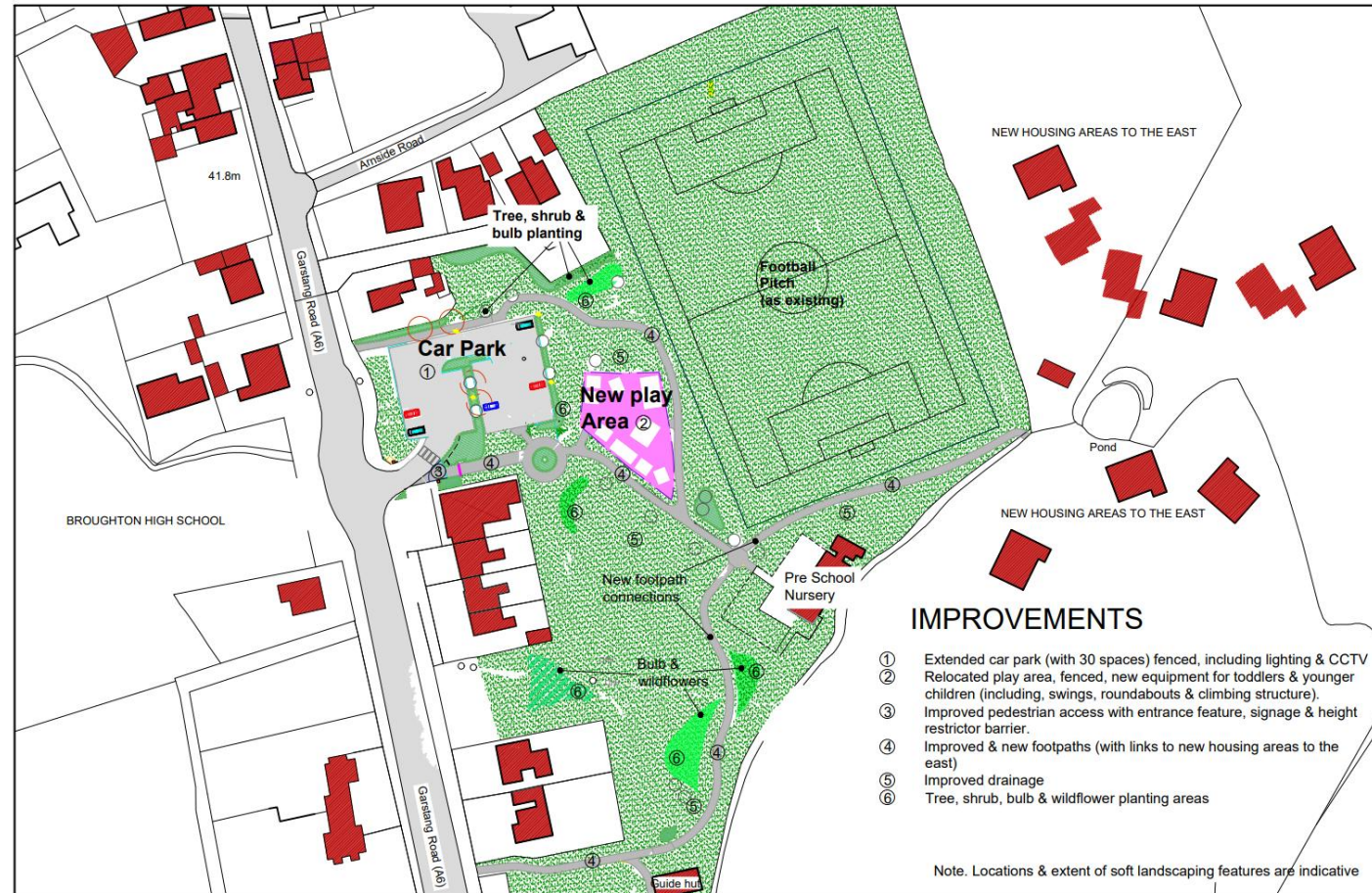


King Georges Playing Field (next stage)

Planning Permission with Preston City Council 06/2025/0698

- Playground: new play equipment but the pig is staying and will have a companion!
- Car Park: extended, resurfaced, landscaped, lighting, CCTV
- Footpaths: re-established and linked to new park
- Seating: not only in the playground
- Wild-flower meadow and tree planting (ENVIRO grant)
- Pond area and linking footpath

King Georges Field: overview



King George V playing field Broughton
PROPOSED SITE MASTERPLAN

Scale 1:1250 @ A4
Drawn M.K.A.
Section. Landscape Design

Date 11.06.2024
Dwg No L.KI.0387.030



FRONT ELEVATION
(showing front face of steel)

PROPOSED (laterals)
Wicketed Rockspay Spring mobile Donkey 6000-073. Cleaned, refitted with concrete footing to manufacturers directions. Safety surface (for 1.0m fall height). 15mm Corkwell Binder Top BT01.1, over 25mm Corkwell Base Layer Engineered Cork Granules L, over Astoria + Corkwell binder for primer (such as BB01.1 or BT01.1) laid over 300mm depth compacted clean permeable Sub Base (min 30% porosity) prepared levelled sub grade formation level. All to manufacturers directions Playground Tel 01564 742811. Retained with concrete tie (PIN) edgings, 50x150mm laid on 150mm bed & backing of GEN 1 in situ concrete.

PROPOSED (laterals)
Wicketed Rockspay Spring mobile Canal 6000-074. Wicketed Tel 01536 517628. Fixed with concrete footings to manufacturers directions. Safety surface (for 0.5m fall height). 15mm Corkwell Binder Top BT01.1, over 25mm Corkwell Base Layer Engineered Cork Granules L, over Astoria + Corkwell binder for primer (such as BB01.1 or BT01.1) laid over 250mm depth compacted DOT Type 1 prepared levelled sub grade formation level. All to manufacturers directions Playground Tel 01564 742811. Retained with concrete tie (PIN) edgings, 50x150mm laid on 150mm bed & backing of GEN 1 in situ concrete.

PROPOSED (laterals)
Wicketed Rockspay Teacup Twister code 6020-085. Cleaned, rubbed down & wash with suitable alkaline / detergent wash. Treated with rust inhibitor. Repeat with 2 coats Rust-Oleum 7000 Alkyd. Colour RAL 1007 Yellow. All applied to manufacturers directions. Fixed with concrete footings to manufacturers directions. Safety surface (for 1.0m fall height). 15mm Corkwell Binder Top BT01.1, over 25mm Corkwell Base Layer Engineered Cork Granules L, over Astoria + Corkwell binder for primer (such as BB01.1 or BT01.1) laid over 300mm depth compacted clean permeable Sub Base (min 30% porosity) prepared levelled sub grade formation level. All to manufacturers directions Playground Tel 01564 742811. Retained with concrete tie (PIN) edgings, 50x150mm laid on 150mm bed & backing of GEN 1 in situ concrete.

PROPOSED
Koman Slide 1.2m Code PCM001-0501. KPSI, sides, Colours: Red Green, Sides Red, Steps Blue Koman Tel 01908 201002. Fittings anti-tamper. Fixed with concrete footings to manufacturers directions. Safety surface (for 1.80m fall height). 15mm Corkwell Binder Top BT01.1, over 25mm Corkwell Base Layer Engineered Cork Granules L, over Astoria + Corkwell binder for primer (such as BB01.1 or BT01.1) laid over 300mm depth compacted clean permeable Sub Base (min 30% porosity) prepared levelled sub grade formation level. All to manufacturers directions Playground Tel 01564 742811. Retained with concrete tie (PIN) edgings, 50x150mm laid on 150mm bed & backing of GEN 1 in situ concrete.

PROPOSED
Koman Single saw frame Code KSM-603 (Tied with Basket 1000mm) Code KSM-90040. Koman Tel 01908 201002. All fittings anti-tamper. Safety surface (for 1.57m fall height). Well pour safety surface (for 1.57m fall height). 15mm EPDM surface course (1.3mm EPDM granules, 18% min binder content) Colour Brown, over 35mm recycled rubber granules (24mm recycled rubber granules, 8% min binder content) supplied & fitted by DCM surfacing DCM Tel 01772 440340. On 130mm depth DOT Type 1 sub base.

PROPOSED
Bench seat & 4 tier bin Benlin Tel 01332429661 code 073mm, galvanneal & powder coated (Dark Green RAL 6005) not fixed. Legs set in GEN 1 concrete to manufacturers directions. Litter bin Binpac Derby Standard 120 L (Dark Green RAL 6005) with feet top & both down. Ring Kt. Binpac Tel 01782 564411 Set on 200mm depth concrete base.

PROPOSED
Bench seat & 4 tier bin Benlin Tel 01332429661 code 073mm, galvanneal & powder coated (Dark Green RAL 6005) not fixed. Legs set in GEN 1 concrete to manufacturers directions. Litter bin Binpac Derby Standard 120 L (Dark Green RAL 6005) with feet top & both down. Ring Kt. Binpac Tel 01782 564411 Set on 200mm depth concrete base.

PROPOSED
Bench seat & 4 tier bin Benlin Tel 01332429661 code 073mm, galvanneal & powder coated (Dark Green RAL 6005) not fixed. Legs set in GEN 1 concrete to manufacturers directions. Litter bin Binpac Derby Standard 120 L (Dark Green RAL 6005) with feet top & both down. Ring Kt. Binpac Tel 01782 564411 Set on 200mm depth concrete base.

PROPOSED
Bench seat & 4 tier bin Benlin Tel 01332429661 code 073mm, galvanneal & powder coated (Dark Green RAL 6005) not fixed. Legs set in GEN 1 concrete to manufacturers directions. Litter bin Binpac Derby Standard 120 L (Dark Green RAL 6005) with feet top & both down. Ring Kt. Binpac Tel 01782 564411 Set on 200mm depth concrete base.

PROPOSED
Bench seat & 4 tier bin Benlin Tel 01332429661 code 073mm, galvanneal & powder coated (Dark Green RAL 6005) not fixed. Legs set in GEN 1 concrete to manufacturers directions. Litter bin Binpac Derby Standard 120 L (Dark Green RAL 6005) with feet top & both down. Ring Kt. Binpac Tel 01782 564411 Set on 200mm depth concrete base.

PROPOSED
Bench seat & 4 tier bin Benlin Tel 01332429661 code 073mm, galvanneal & powder coated (Dark Green RAL 6005) not fixed. Legs set in GEN 1 concrete to manufacturers directions. Litter bin Binpac Derby Standard 120 L (Dark Green RAL 6005) with feet top & both down. Ring Kt. Binpac Tel 01782 564411 Set on 200mm depth concrete base.

PROPOSED
Bench seat & 4 tier bin Benlin Tel 01332429661 code 073mm, galvanneal & powder coated (Dark Green RAL 6005) not fixed. Legs set in GEN 1 concrete to manufacturers directions. Litter bin Binpac Derby Standard 120 L (Dark Green RAL 6005) with feet top & both down. Ring Kt. Binpac Tel 01782 564411 Set on 200mm depth concrete base.

PROPOSED
Bench seat & 4 tier bin Benlin Tel 01332429661 code 073mm, galvanneal & powder coated (Dark Green RAL 6005) not fixed. Legs set in GEN 1 concrete to manufacturers directions. Litter bin Binpac Derby Standard 120 L (Dark Green RAL 6005) with feet top & both down. Ring Kt. Binpac Tel 01782 564411 Set on 200mm depth concrete base.

PROPOSED
Bench seat & 4 tier bin Benlin Tel 01332429661 code 073mm, galvanneal & powder coated (Dark Green RAL 6005) not fixed. Legs set in GEN 1 concrete to manufacturers directions. Litter bin Binpac Derby Standard 120 L (Dark Green RAL 6005) with feet top & both down. Ring Kt. Binpac Tel 01782 564411 Set on 200mm depth concrete base.

PROPOSED
Bench seat & 4 tier bin Benlin Tel 01332429661 code 073mm, galvanneal & powder coated (Dark Green RAL 6005) not fixed. Legs set in GEN 1 concrete to manufacturers directions. Litter bin Binpac Derby Standard 120 L (Dark Green RAL 6005) with feet top & both down. Ring Kt. Binpac Tel 01782 564411 Set on 200mm depth concrete base.

PROPOSED
Bench seat & 4 tier bin Benlin Tel 01332429661 code 073mm, galvanneal & powder coated (Dark Green RAL 6005) not fixed. Legs set in GEN 1 concrete to manufacturers directions. Litter bin Binpac Derby Standard 120 L (Dark Green RAL 6005) with feet top & both down. Ring Kt. Binpac Tel 01782 564411 Set on 200mm depth concrete base.

PROPOSED
Bench seat & 4 tier bin Benlin Tel 01332429661 code 073mm, galvanneal & powder coated (Dark Green RAL 6005) not fixed. Legs set in GEN 1 concrete to manufacturers directions. Litter bin Binpac Derby Standard 120 L (Dark Green RAL 6005) with feet top & both down. Ring Kt. Binpac Tel 01782 564411 Set on 200mm depth concrete base.

PROPOSED
Bench seat & 4 tier bin Benlin Tel 01332429661 code 073mm, galvanneal & powder coated (Dark Green RAL 6005) not fixed. Legs set in GEN 1 concrete to manufacturers directions. Litter bin Binpac Derby Standard 120 L (Dark Green RAL 6005) with feet top & both down. Ring Kt. Binpac Tel 01782 564411 Set on 200mm depth concrete base.

PROPOSED
Bench seat & 4 tier bin Benlin Tel 01332429661 code 073mm, galvanneal & powder coated (Dark Green RAL 6005) not fixed. Legs set in GEN 1 concrete to manufacturers directions. Litter bin Binpac Derby Standard 120 L (Dark Green RAL 6005) with feet top & both down. Ring Kt. Binpac Tel 01782 564411 Set on 200mm depth concrete base.

PROPOSED
Bench seat & 4 tier bin Benlin Tel 01332429661 code 073mm, galvanneal & powder coated (Dark Green RAL 6005) not fixed. Legs set in GEN 1 concrete to manufacturers directions. Litter bin Binpac Derby Standard 120 L (Dark Green RAL 6005) with feet top & both down. Ring Kt. Binpac Tel 01782 564411 Set on 200mm depth concrete base.

PROPOSED
Bench seat & 4 tier bin Benlin Tel 01332429661 code 073mm, galvanneal & powder coated (Dark Green RAL 6005) not fixed. Legs set in GEN 1 concrete to manufacturers directions. Litter bin Binpac Derby Standard 120 L (Dark Green RAL 6005) with feet top & both down. Ring Kt. Binpac Tel 01782 564411 Set on 200mm depth concrete base.

PROPOSED
Bench seat & 4 tier bin Benlin Tel 01332429661 code 073mm, galvanneal & powder coated (Dark Green RAL 6005) not fixed. Legs set in GEN 1 concrete to manufacturers directions. Litter bin Binpac Derby Standard 120 L (Dark Green RAL 6005) with feet top & both down. Ring Kt. Binpac Tel 01782 564411 Set on 200mm depth concrete base.

PROPOSED
Bench seat & 4 tier bin Benlin Tel 01332429661 code 073mm, galvanneal & powder coated (Dark Green RAL 6005) not fixed. Legs set in GEN 1 concrete to manufacturers directions. Litter bin Binpac Derby Standard 120 L (Dark Green RAL 6005) with feet top & both down. Ring Kt. Binpac Tel 01782 564411 Set on 200mm depth concrete base.


PROPOSED
Bench seat & 4 tier bin Benlin Tel 01332429661 code 073mm, galvanneal & powder coated (Dark Green RAL 6005) not fixed. Legs set in GEN 1 concrete to manufacturers directions. Litter bin Binpac Derby Standard 120 L (Dark Green RAL 6005) with feet top & both down. Ring Kt. Binpac Tel 01782 564411 Set on 200mm depth concrete base.

PROPOSED
Bench seat & 4 tier bin Benlin Tel 01332429661 code 073mm, galvanneal & powder coated (Dark Green RAL 6005) not fixed. Legs set in GEN 1 concrete to manufacturers directions. Litter bin Binpac Derby Standard 120 L (Dark Green RAL 60

Link though to the new park

King George's Field





Wainhomes development, New Park, Community Building & Allotments

Application number: 06/2025/0519

- **Care Home:** CLLP evidence supports the need for this, the village has two supported living developments The Millstones & Sunningdale
- **167 Dwellings:** The developer have already shown they are able to deliver affordable homes, apartments and bungalows at Pinfold Manor & the Lawns.
- Letter received by the Parish Council outlining the community assets that provide part of this application that are being developed and gifted.

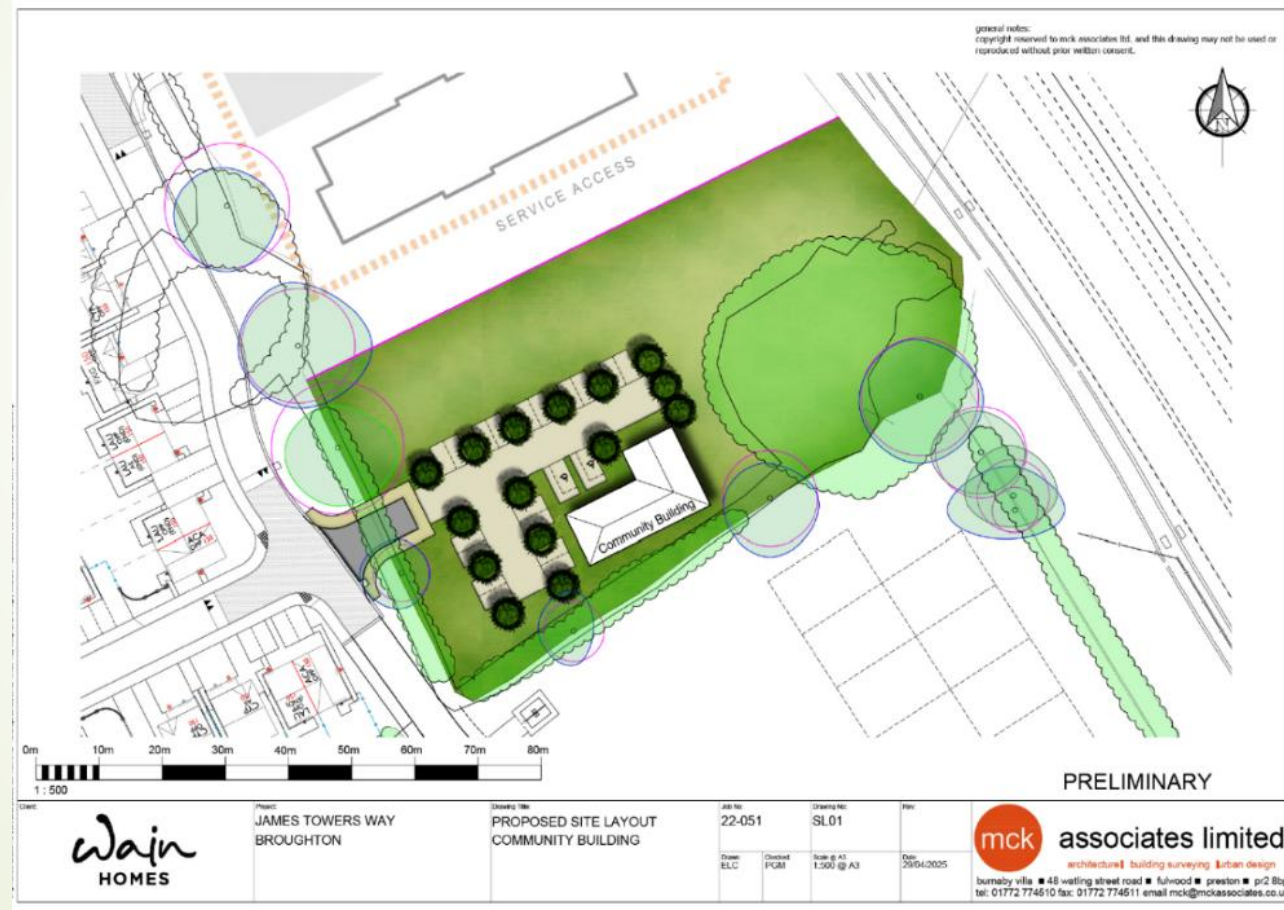


Community Assets



- A modular community building adjacent to a new allotment site, designed to be expandable to accommodate future needs (such as housing a preschool).
- A linear footpath connecting the primary school to Broughton East.
- A large pond and ecology area with a connecting bridge and footpath network, linking to King George's Field and enhancing local biodiversity.
- A field to be gifted to the school trust, to help mitigate the impact of new classroom buildings and potentially provide a staff car park—addressing the significant parking challenges that will arise from the planned doubling in size of the primary school.

Community Building with car park and community garden





Parish Action Plan: Key Issues

Traffic issues

Speeding key areas for concern

Garstang Road, Woodplumpton Lane, Whittingham Lane,
Durton Lane

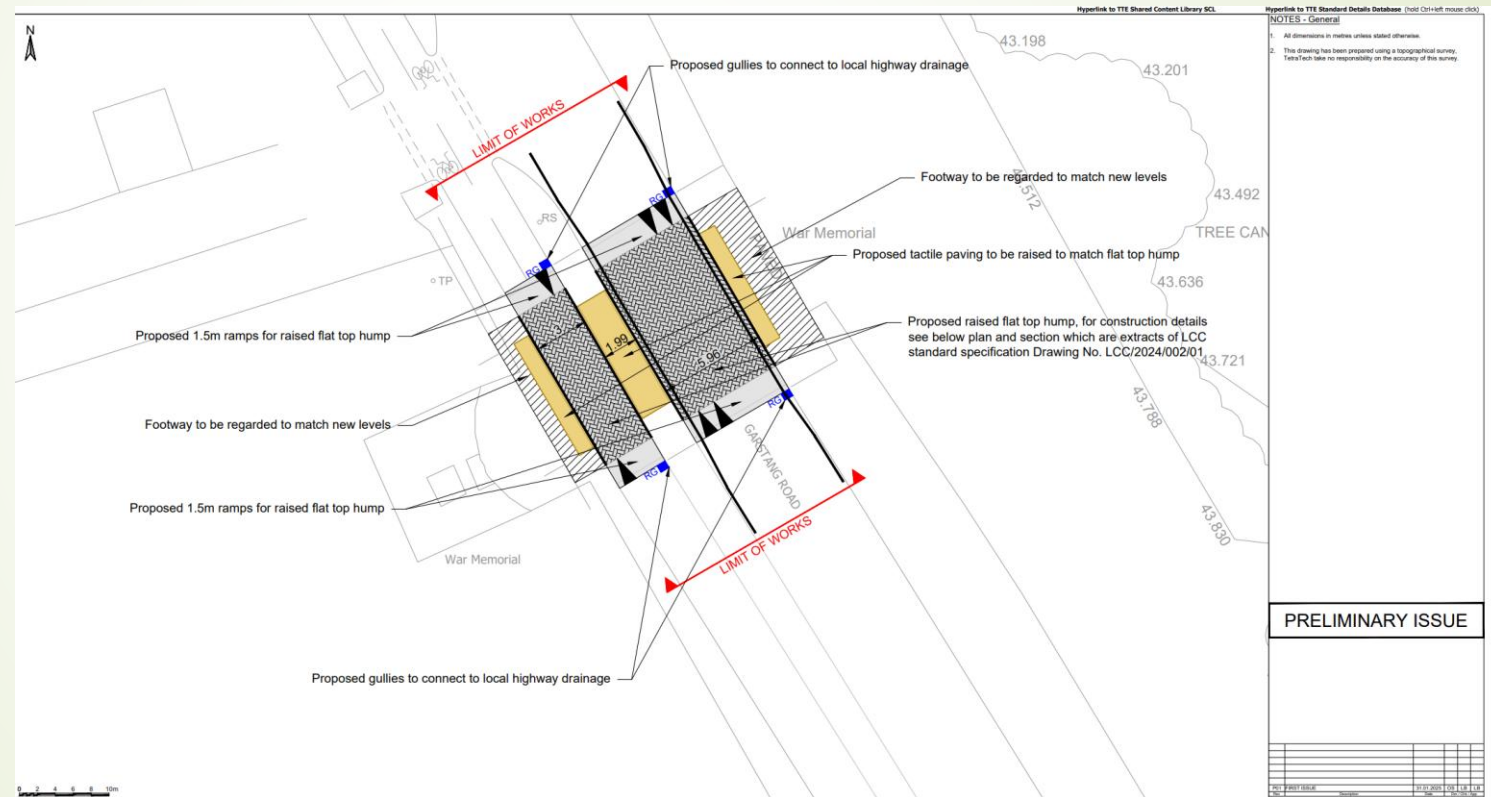
Spids

Static Data: to LRSP

Speed guns: teams (now have four volunteers need more)

Report it: <https://lancsroadsafety.co.uk/speed-concern-options/>

War memorial road area





Parking

1) High school use of car park off Sandygate Lane, signX2 requested to direct awaiting LCC comments

Yellow lines by Northway done. Teachers are acting as wardens after school.

2) Primary school: new building but no additional

3) Car park: KGV field already discussed

4) Street: Village no parking zone, yellow lines requested for the Village Realm area.



Youth work

25% of Broughton residents are of school age

- Anti social behaviour on the Park: Litter, Drinking under the pre-school awning, making ramps in the field
- Need to have somewhere to meet up
- Already have active Scout & Guide groups
- PC looking into funding for a youth worker
- Hopefully the community building will be available in 2027

Ideas welcome chair@broughton-pc.gov.uk



Local Government Reorganisation: What it means to Broughton

- Lancashire Combined Authority: LCC, Blackburn with Darwen & Blackpool with the 12 Districts, Towns & Cities having two advisory representatives.

Currently a level two CA with no mayor so missing out on some funding

- Devolution: November 2025 the 15 LA's to submit plans to the government for two or three or even more Unitary Authorities!

May 2026 new authorities agreed (if the LCA agree mayoral elections)

May 2027 Elections for new authorities (800+ cllrs down to 200)

May 2028 "Vesting" i.e. the new Unitaries take over

Broughton Environmental Group

- Tree Preservation Order's
- Public Rights Of Way & the Guild Wheel
- Footpaths & Hedges
- To propose any additional enhancements for the Parish
- Flower beds & Tubs: sponsorship
- Work with the Lengthsman & Volunteers

!





Heritage Open Days 2025

Wednesday 3rd September

- 13.00 Broughton Village walk 1 to 1.30 hours with leaflets for other walks available,
- 15.00 The story of Fernyhalgh & Ladyewell talk: pamphlet available

Saturday 20th September

- 13.00 Broughton Village walk 1 to 1.30 hours with leaflets for other walks available
- 15.00 The story of Toll bar Cottage & Broughton Henge talk: pamphlet available

Book online

Village news

- Mosque Building work started
- Mini Orchard in the historic pinfold planted
- New Councillors recruited
- New County Councillor: Maria Jones
- Central Lancashire Local Plan: Where its at???
- Summer e-news: Out later this month
- Cottage events:

“Movement made social” 10.30

last Saturday of the month

McMillian Afternoon tea 8th August 1.00 to 3.30





Over to you...Open Forum

clerk@broughton-pc.gov.uk

www.broughton-pc.gov.uk

Next session 18th October 2025 @ 10am